

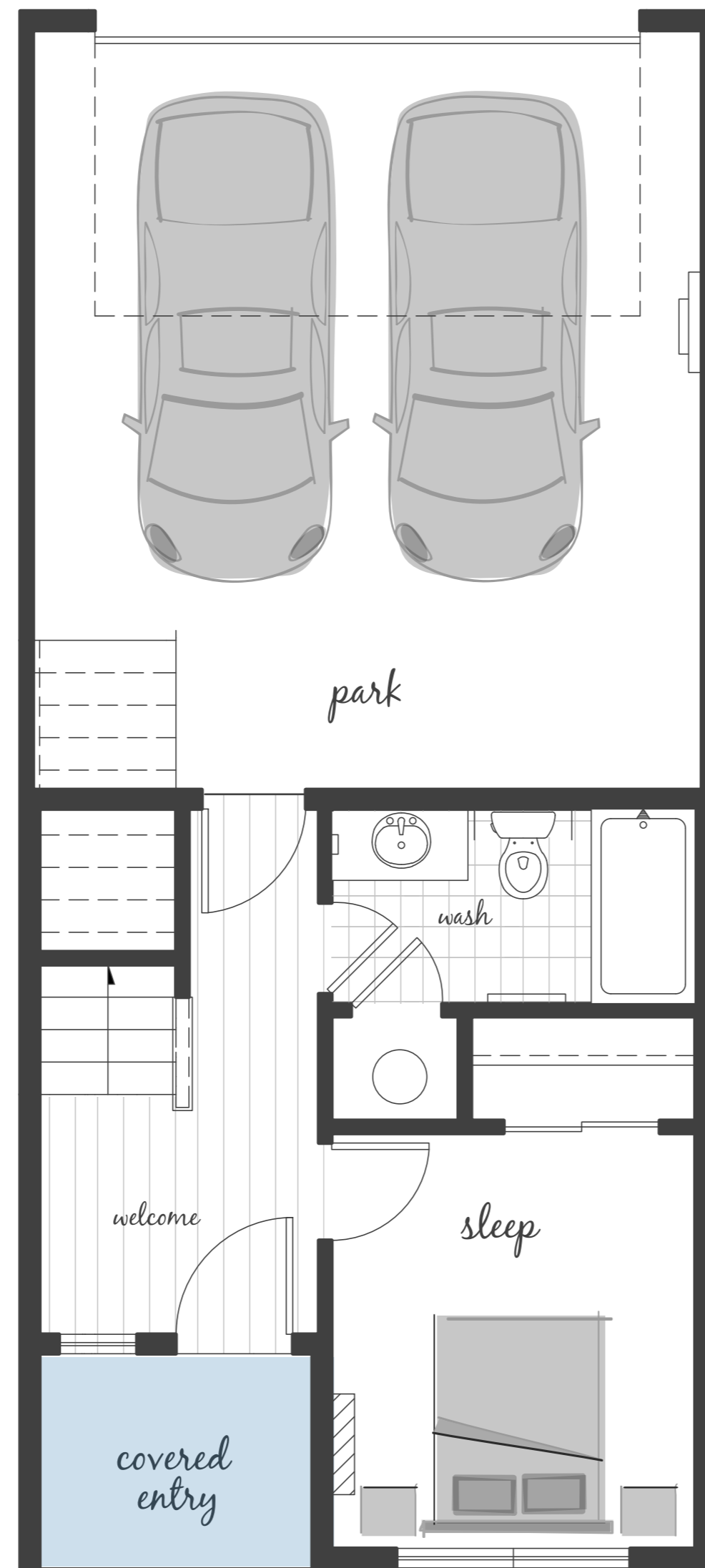
BRAES PARK

sq ft 1710

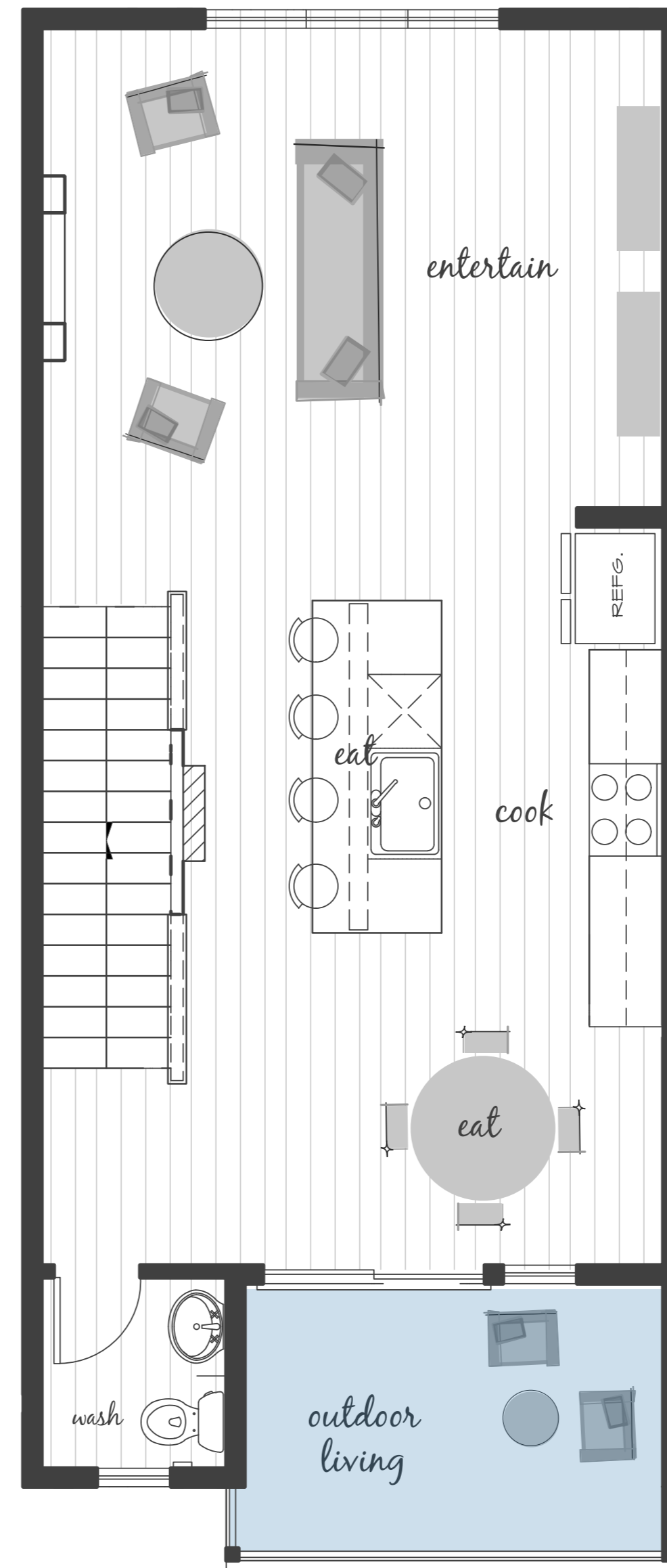
- 3 Bedrooms
- 3.5 Bath
- 2 Car Garage
- Heated Outdoor Living

Designer features

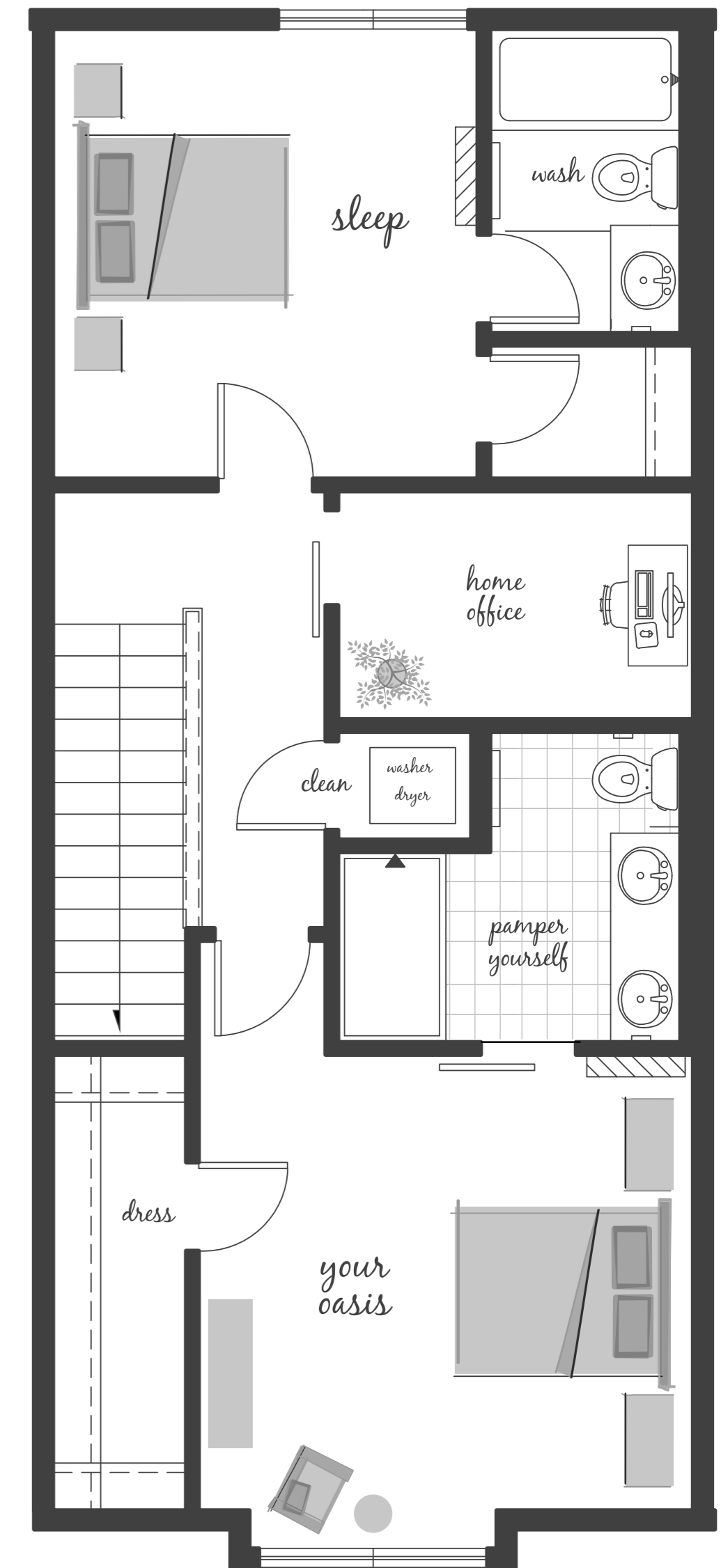
- Open Concept Living Space
- Contemporary Kitchen
- Quartz Countertops
- Heated Outdoor Living
- Double Bedroom Suites



Lower Floor



Main Floor



Upper Floor



Westcott
HOMES

westcotthomes.com

In a continuous effort to improve its products, the builder reserves the right in its sole discretion to make changes or modifications to maps, plans, specifications, materials, features, and colors without notice. All maps, plans, landscaping and elevation renderings are artists' conceptions and are not to scale. Each of the Westcott Homes communities is developed by a separate limited liability company (LLC) or is a separate corporate entity.