



sq ft 2417

4 Bedrooms

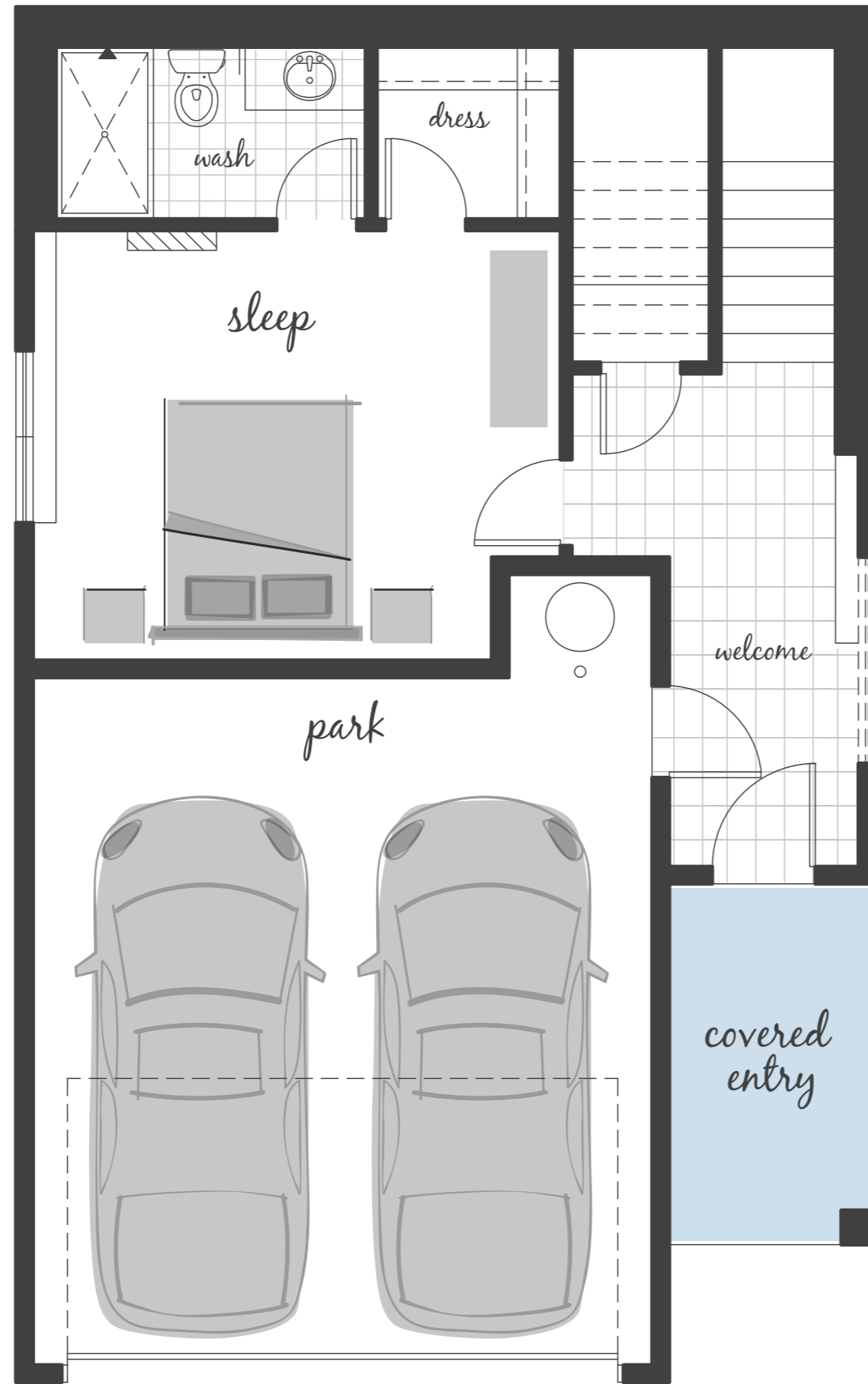
3.5 Bath

2 Car Garage

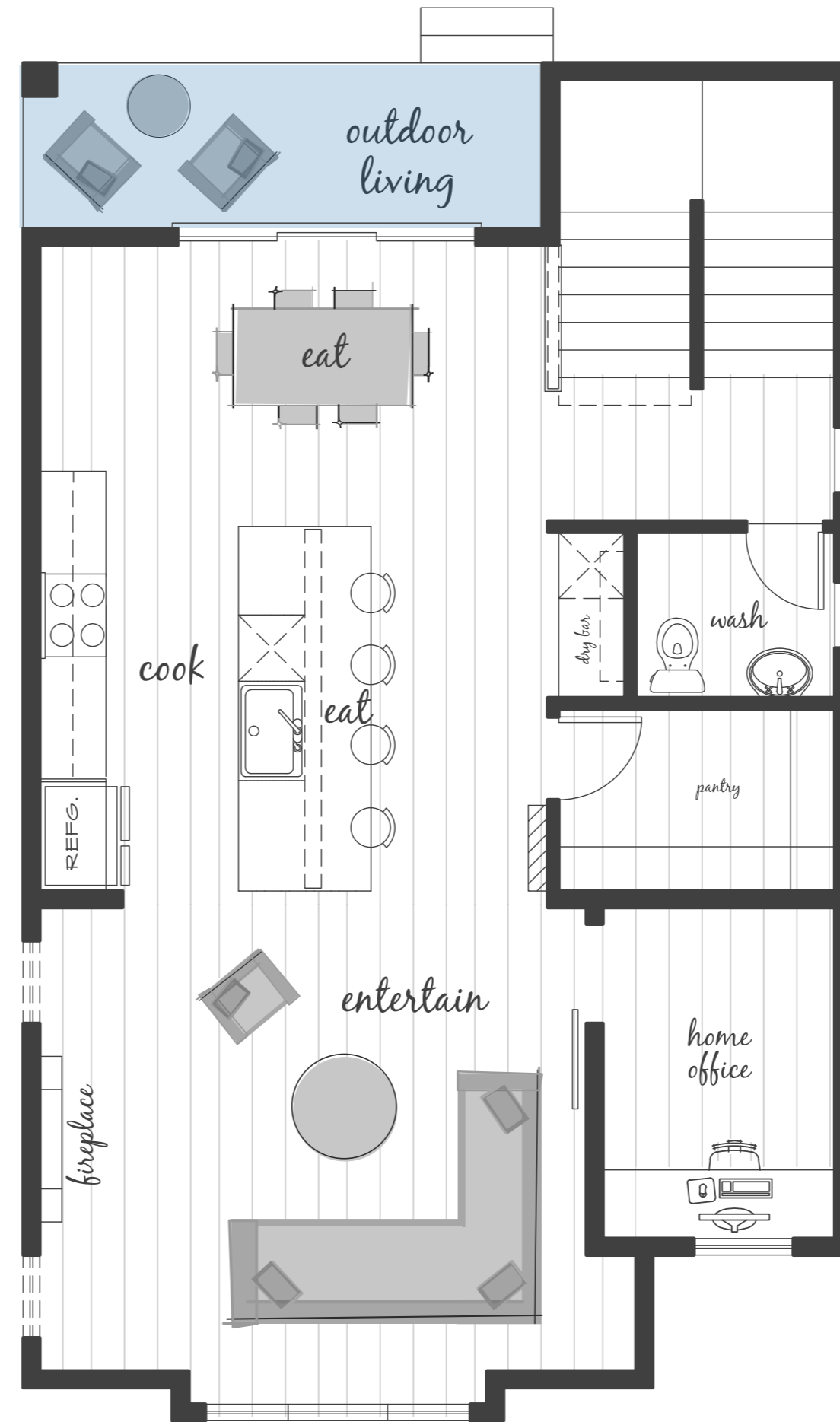
Office

Designer features

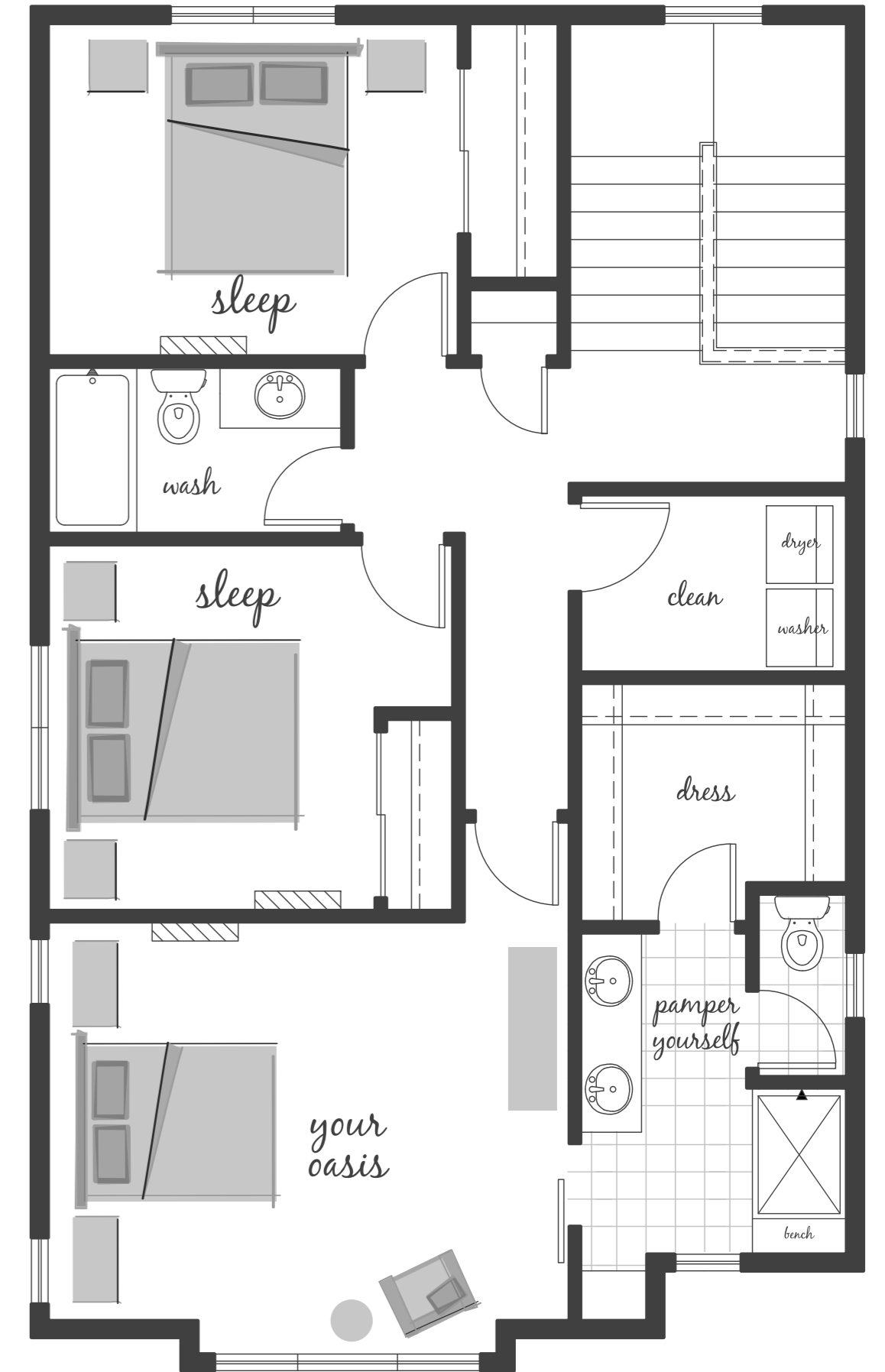
- Open Concept Living Space
- Contemporary Kitchen
- Quartz Countertops
- Home Office
- Cozy Fireplace
- Modern Dry Bar with Shelves



Lower Floor



Main Floor



Upper Floor



In a continuous effort to improve its products, the builder reserves the right in its sole discretion to make changes or modifications to maps, plans, specifications, materials, features, and colors without notice. All maps, plans, landscaping and elevation renderings are artists' conceptions and are not to scale. Each of the Westcott Homes communities is developed by a separate limited liability company (LLC) or is a separate corporate entity.