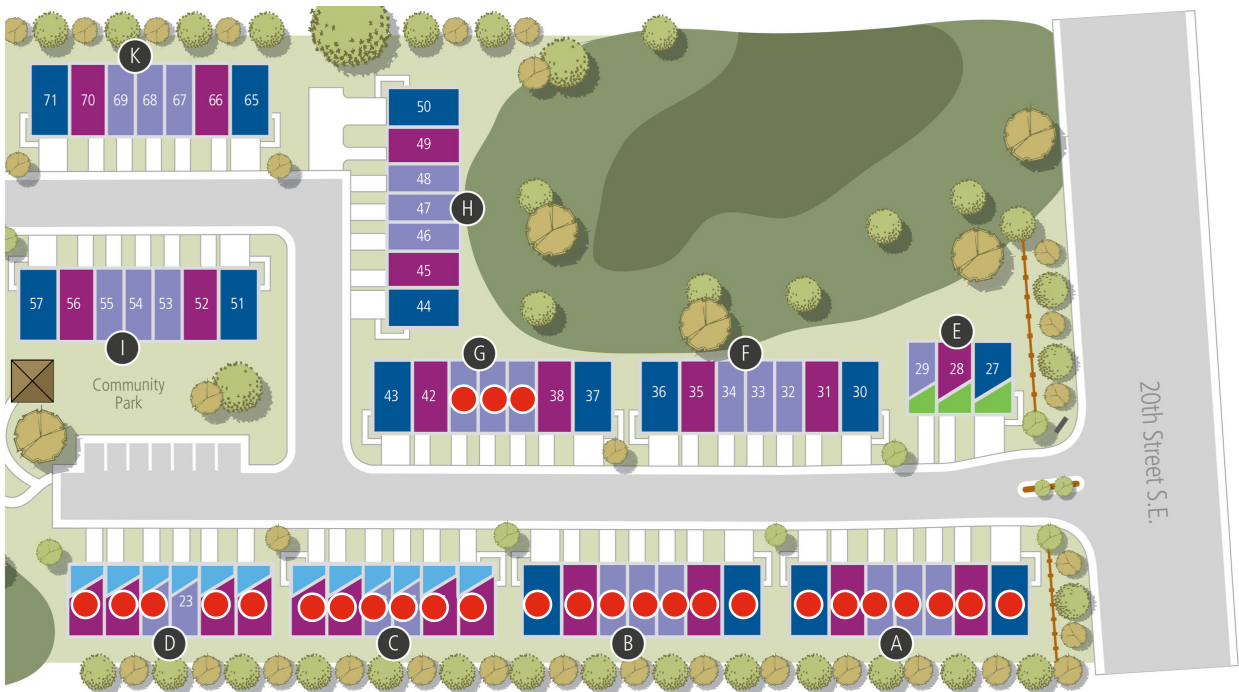


THE FARMHOUSES at Roxburghe



SOLD

1332 - Design 1

2105 - Design 3

Single car garage

1776 - Design 2

Model Home

Newest Price Releases

Design 1A | Homesite D23 | \$370,900

Contemporary Gray Color Scheme, 1 Car Garage, Cozy Fireplace, Refrigerator/Washer/Dryer

Design 1C | Homesite H48 | \$384,900

Greenbelt Homesite, 2 Car Tandem Garage, Cozy Fireplace, Wine Bar & Refrigerator/Washer/Dryer

Design 2 | Homesite G42 | \$419,900

Colonial White Color Scheme, Refrigerator/Washer/Dryer

Seller reserves the right to change the product offering & pricing without notice. Renderings, photos & views are approximate, but not guaranteed. Subject to change. 11/19/2020



Contact Agent:
Jenell Steltz
(425) 356-7033
jsteltz@windermere.com

The Farmhouses at Roxburghe
10117 20th St SE
Lake Stevens, WA 98258