

THE FARMHOUSES

at Roxburghe

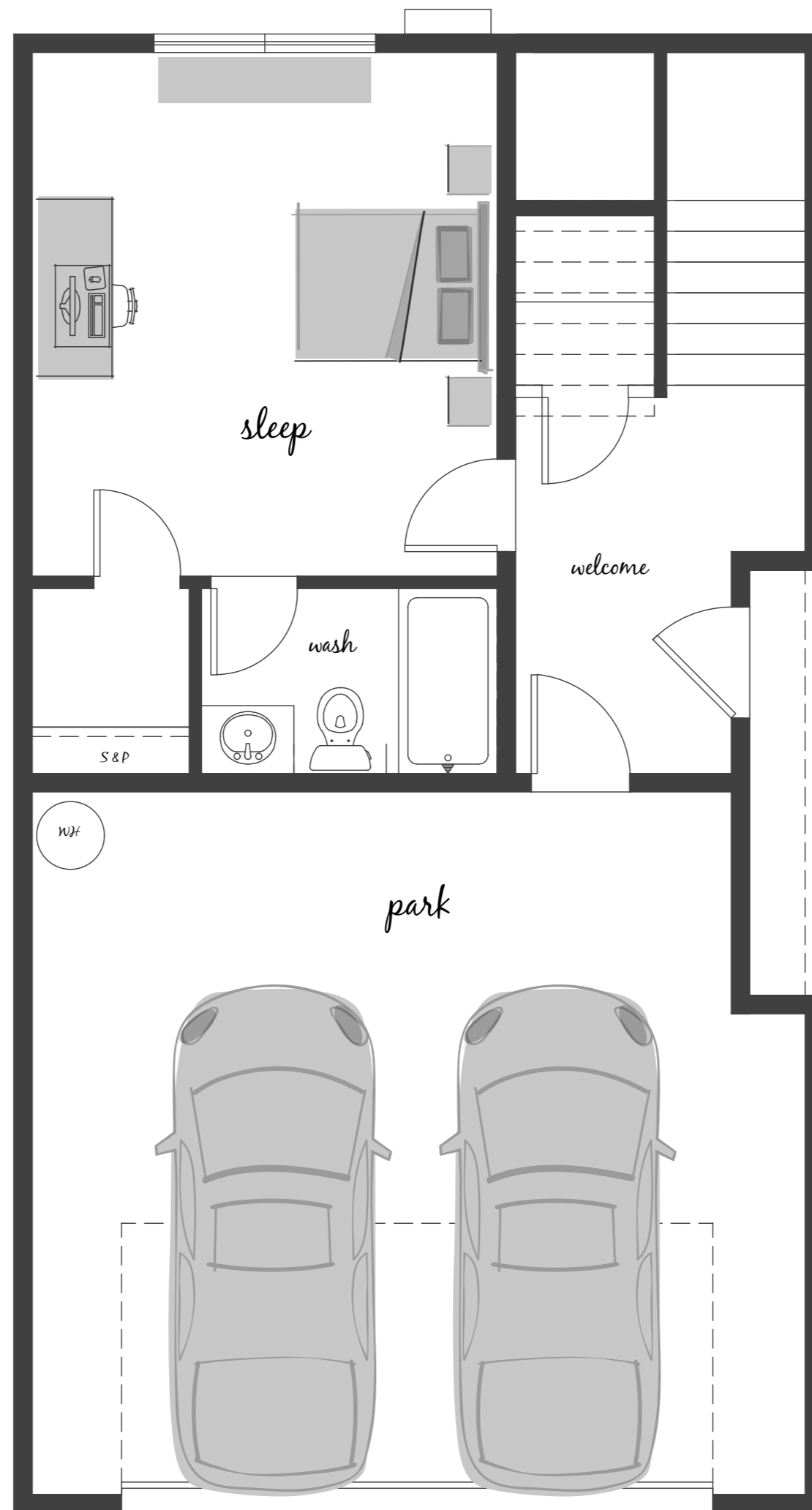
sq ft **2105**

- 4 Bedrooms
- 3.5 Bath
- 2 Car Garage
- Tech Niche

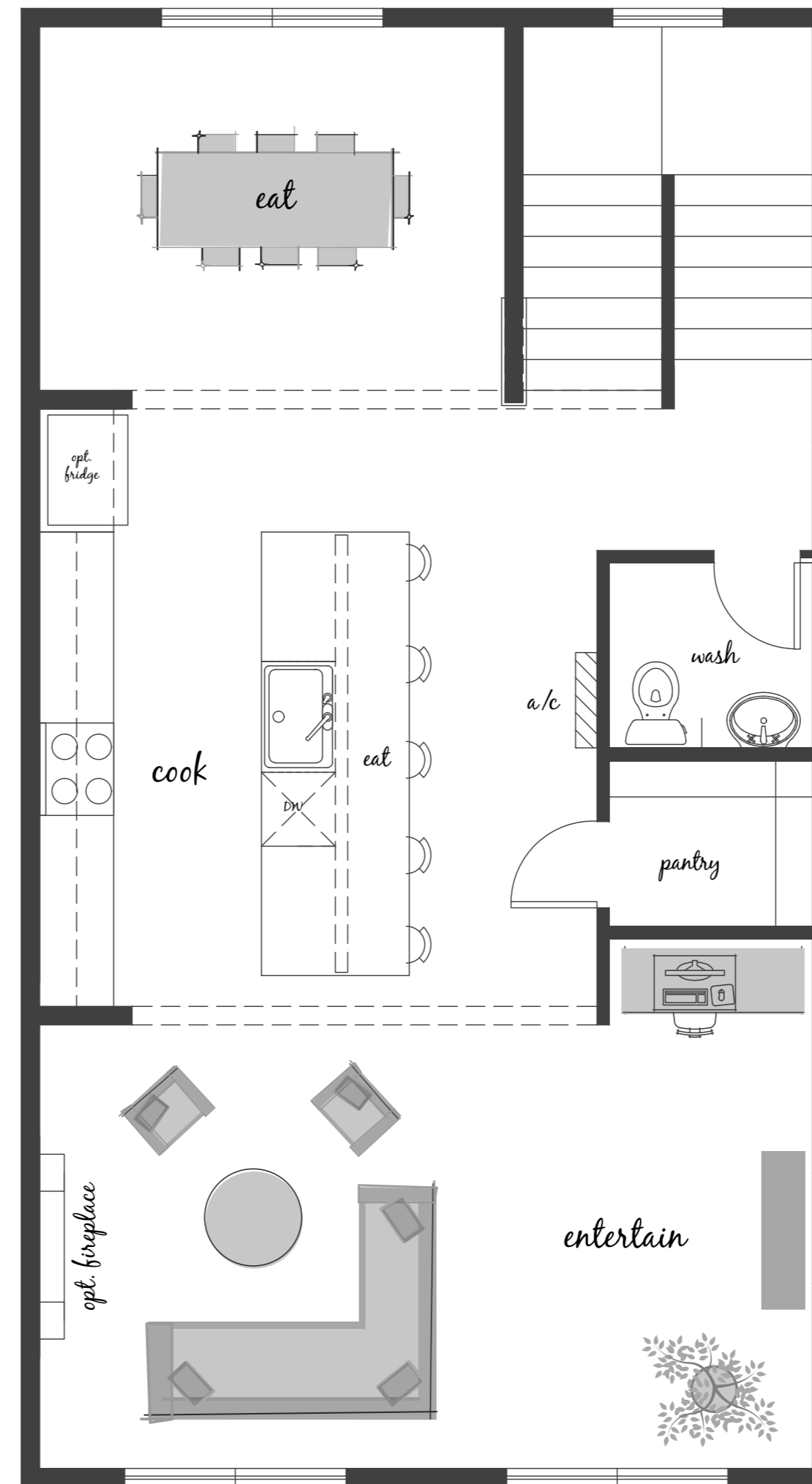


designer features

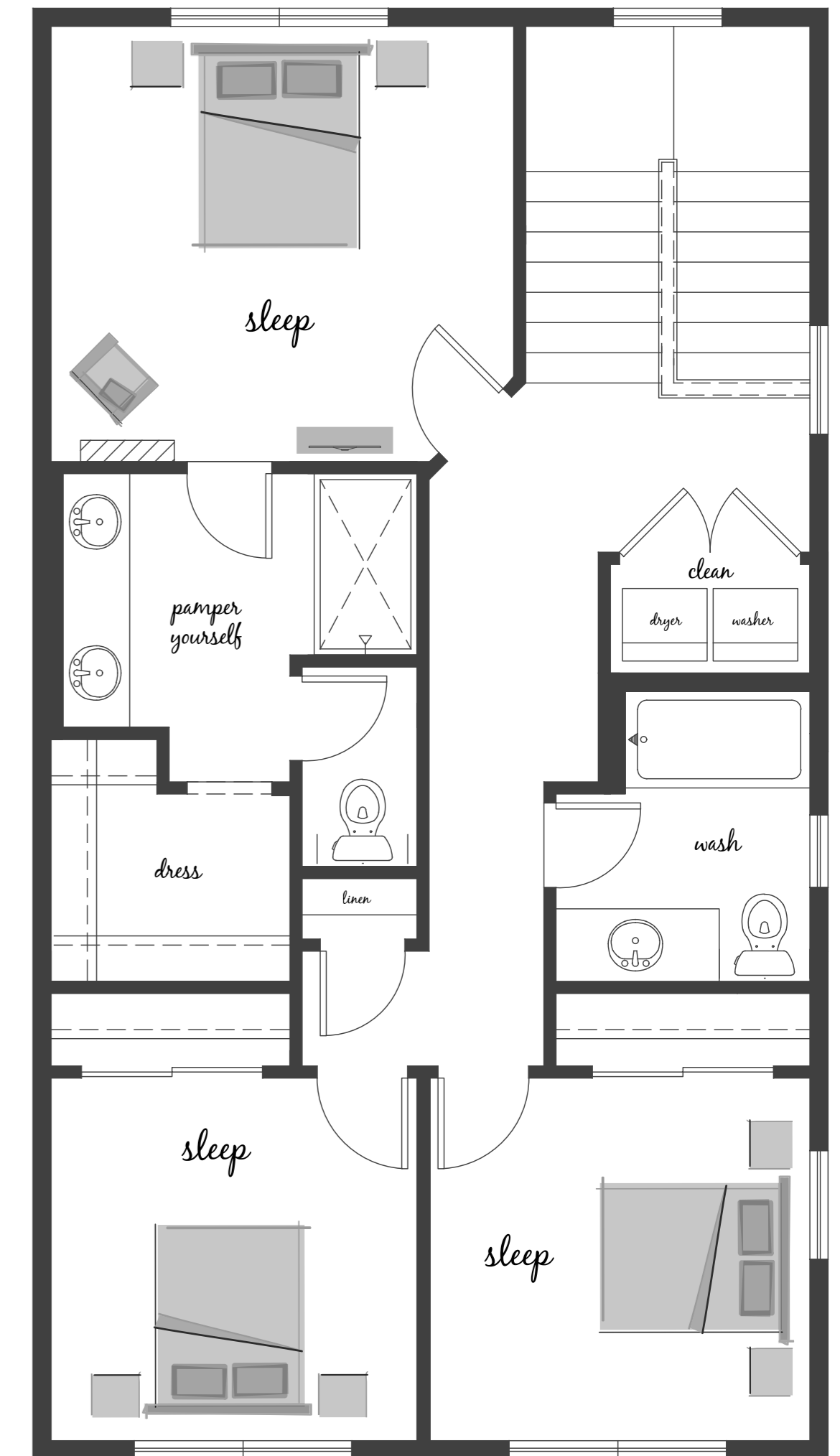
- Versatile First Floor Bedroom
- Light Filled Living Spaces
- Spacious Chef's Kitchen
- Quartz Countertops
- Luxurious Ensuite Bath
- Convenient Tech Niche



Lower Floor



Main Floor



Upper Floor

Westcott
HOMES

westcotthomes.com

In a continuous effort to improve its products, the builder reserves the right in its sole discretion to make changes or modifications to maps, plans, specifications, materials, features, and colors without notice. All maps, plans, landscaping and elevation renderings are artists' conceptions and are not to scale. Each of the Westcott Homes communities is developed by a separate limited liability company (LLC) or is a separate corporate entity.

