

# THE FARMHOUSES

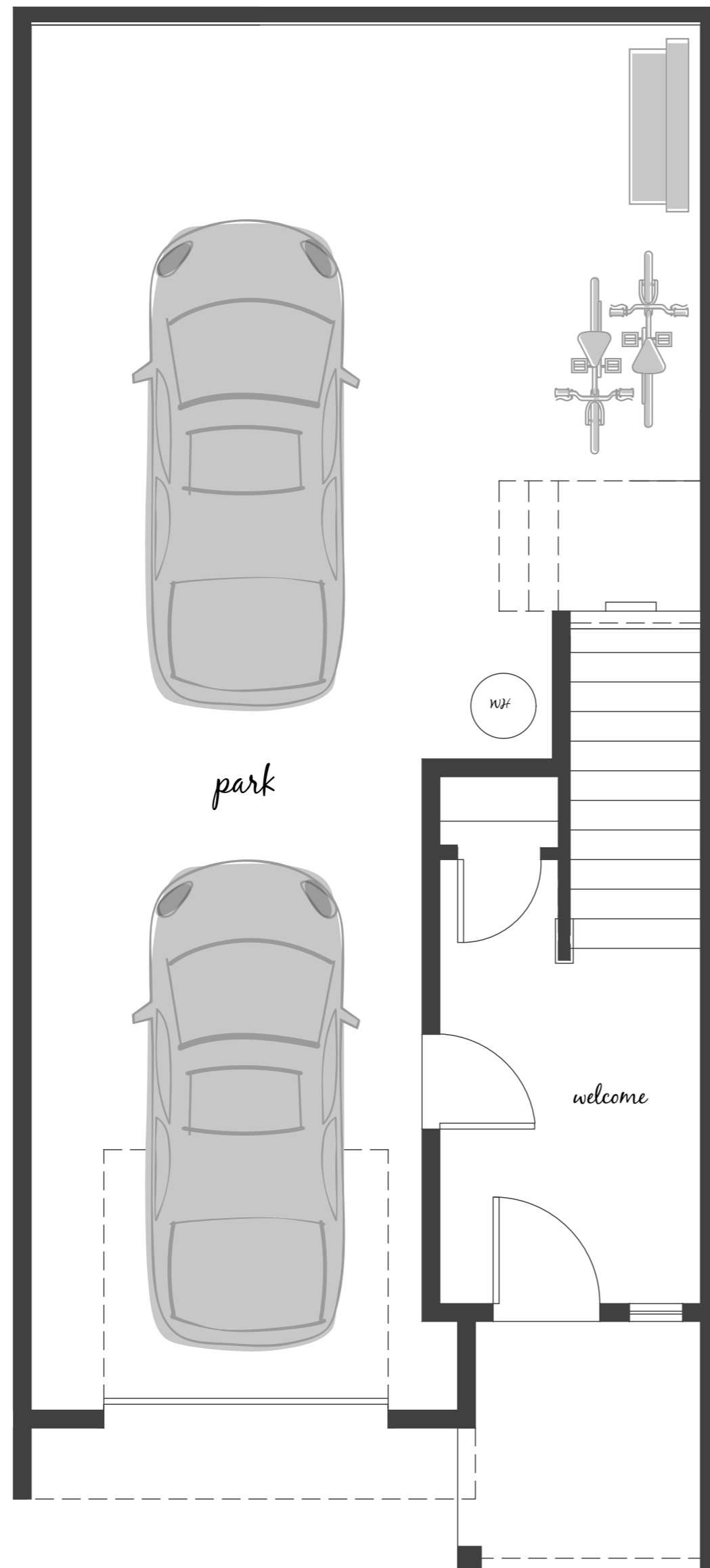
at Roxburghe

sq ft 1776

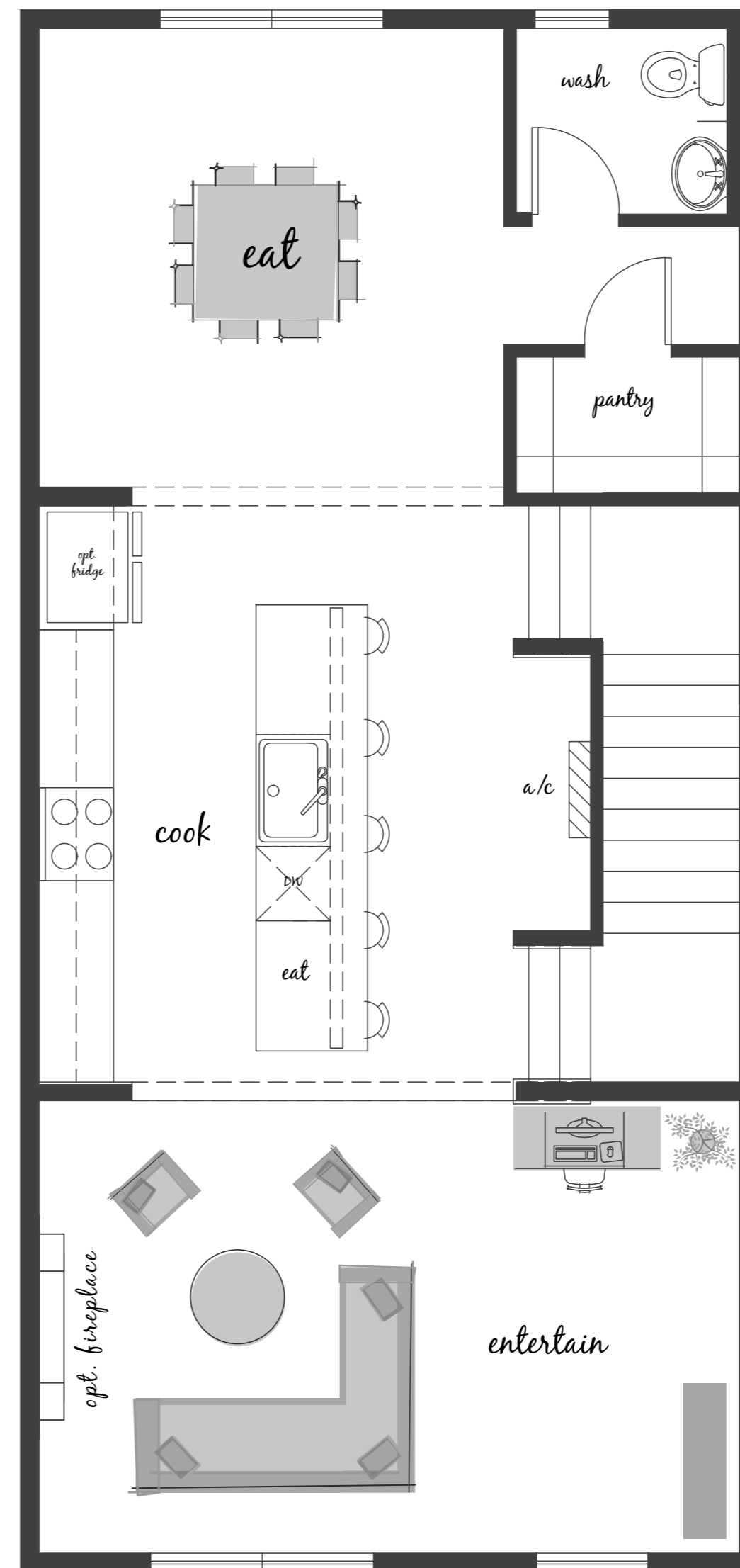
- 3 Bedrooms
- 2.5 Bath
- 2 Car Garage
- Extra storage

## designer features

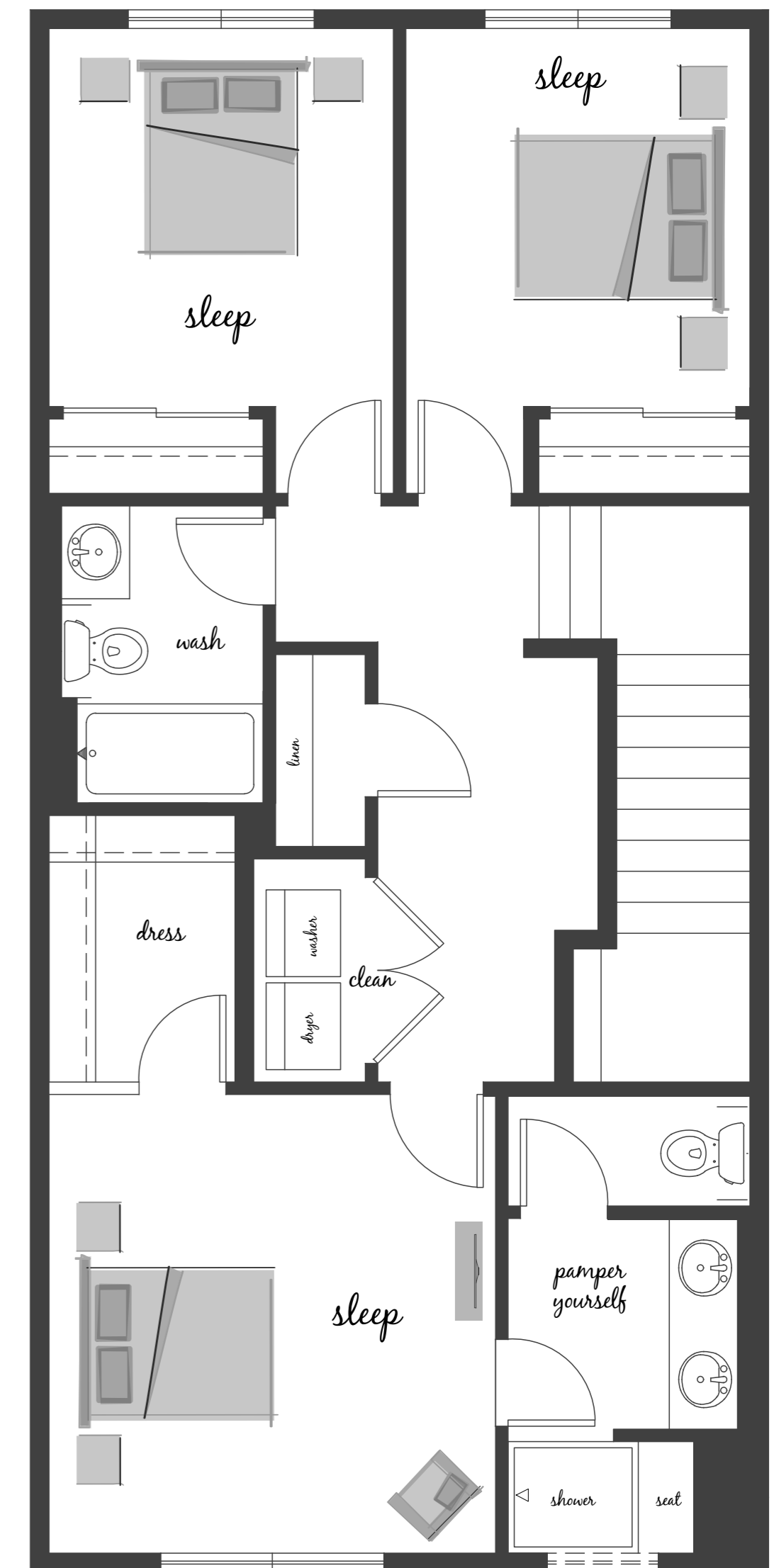
- Extra Garage Storage
- Open Concept Living Space
- Entertainers Kitchen
- Spacious Dining Room
- Ensuite Master Bath



Lower Floor



Main Floor



Upper Floor



westcotthomes.com

In a continuous effort to improve its products, the builder reserves the right in its sole discretion to make changes or modifications to maps, plans, specifications, materials, features, and colors without notice. All maps, plans, landscaping and elevation renderings are artists' conceptions and are not to scale. Each of the Westcott Homes communities is developed by a separate limited liability company (LLC) or is a separate corporate entity.

