

# The Ponds

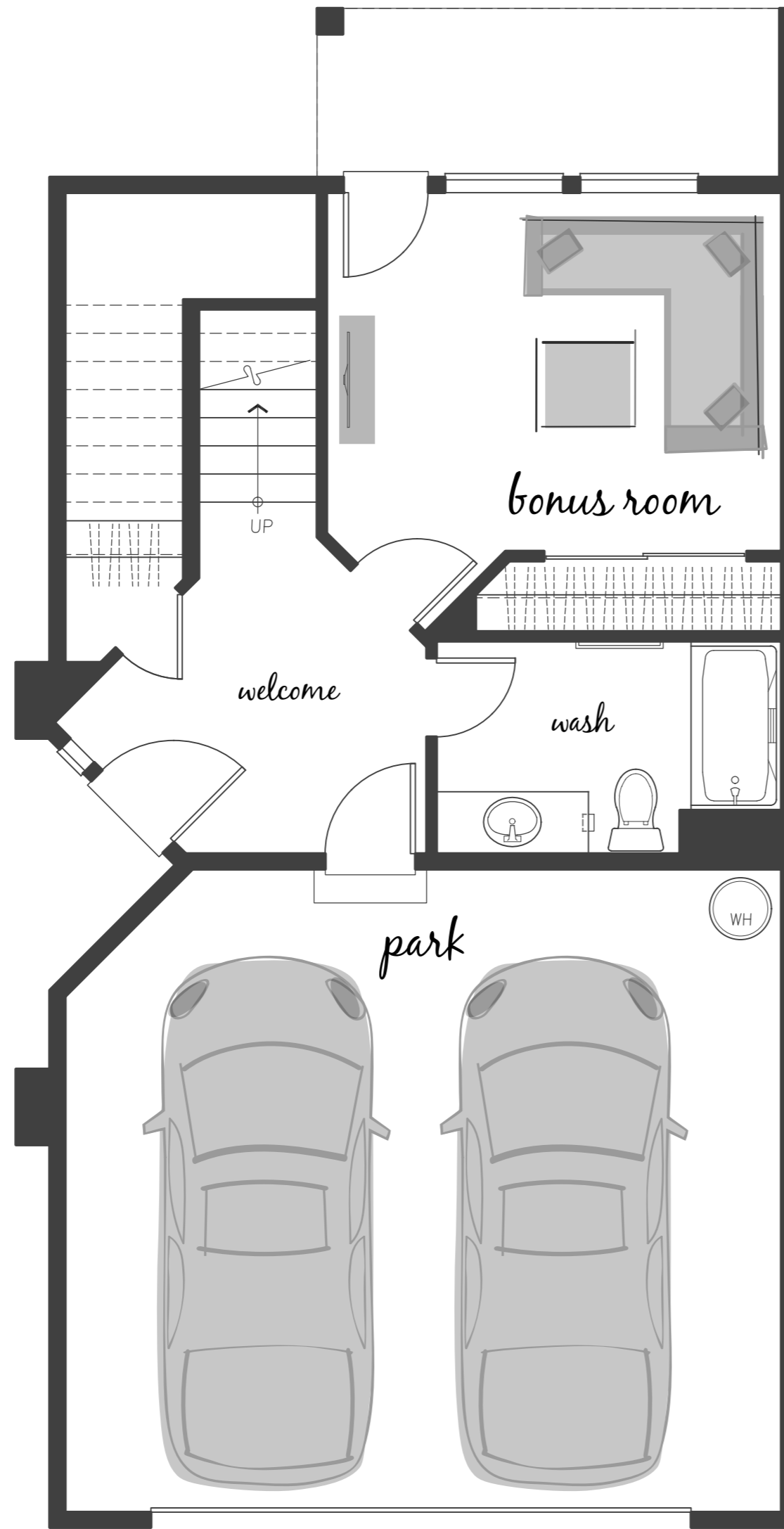
sq ft **2320**

3 or 4 Bedrooms 3.25 Bath 2 Car Garage

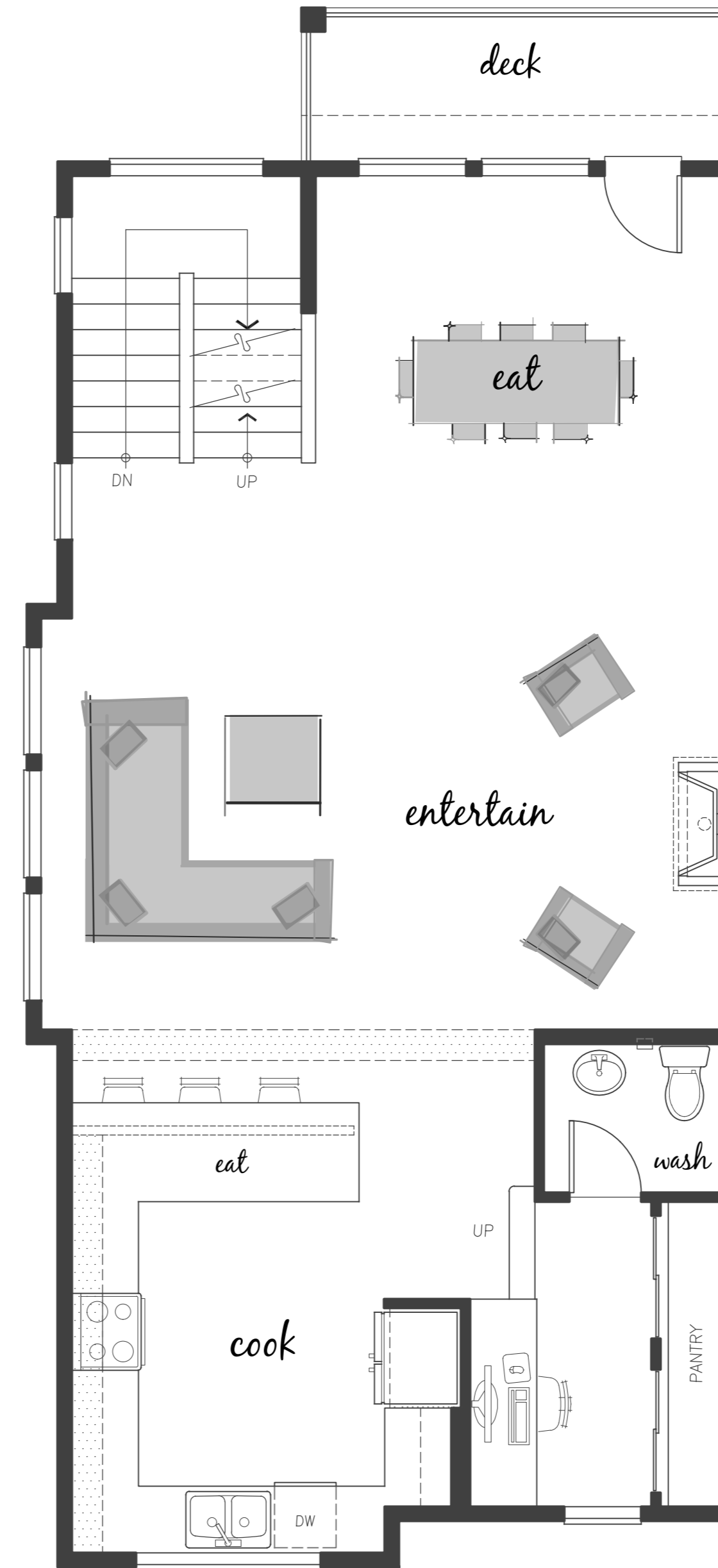


## designer features

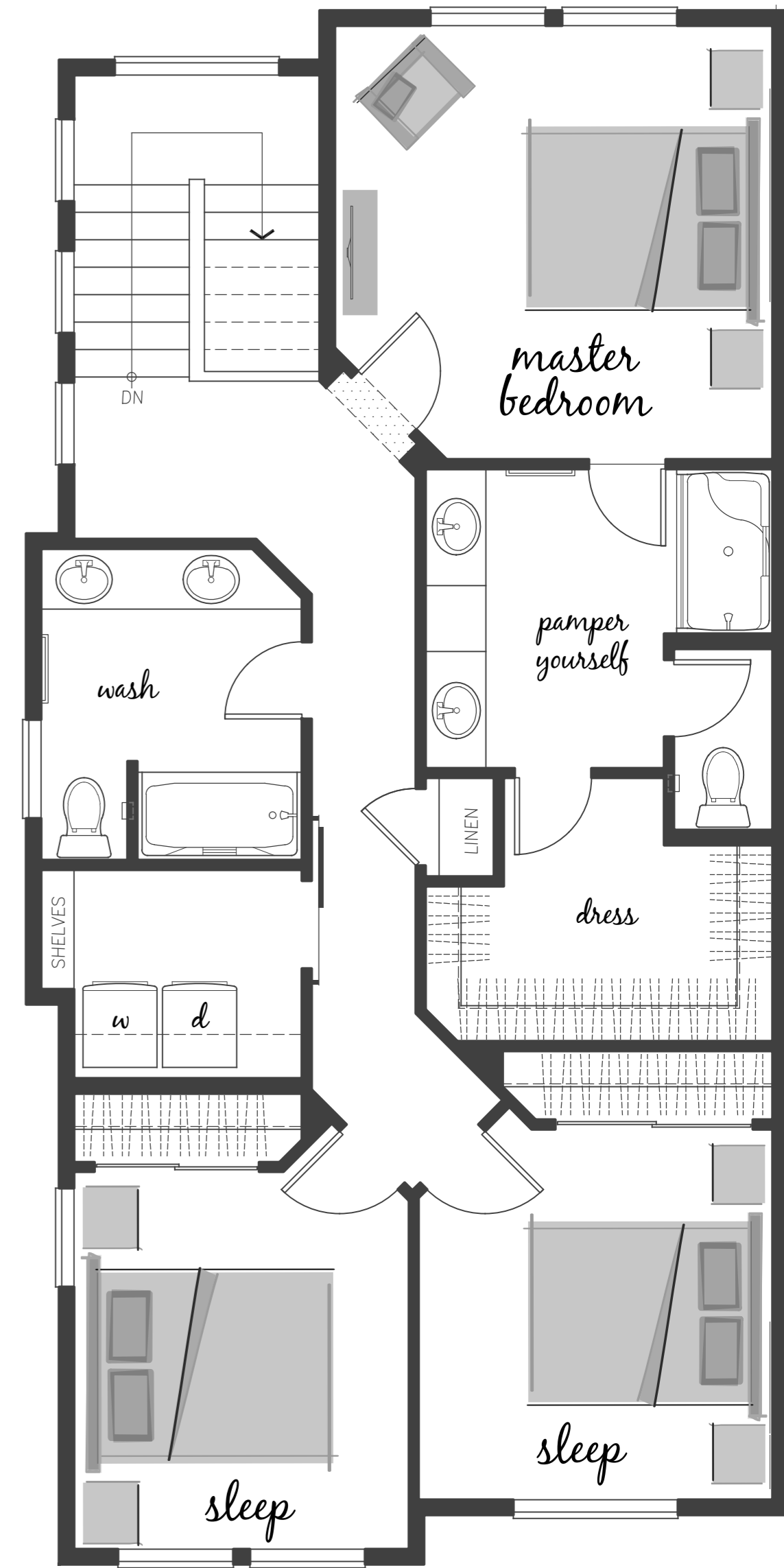
- Open Concept Living Space
- Contemporary Kitchen
- Quartz Countertops
- Great Space for Entertaining
- Upstairs Mater Suite
- Lower Floor Guest Suite or Bonus Room



Lower Floor



Middle Floor



Upper Floor



Westcott  
HOMES

westcotthomes.com

In a continuous effort to improve its products, the builder reserves the right in its sole discretion to make changes or modifications to maps, plans, specifications, materials, features, and colors without notice. All maps, plans, landscaping and elevation renderings are artists' conceptions and are not to scale. Each of the Westcott Homes communities is developed by a separate limited liability company (LLC) or is a separate corporate entity.