

The Ponds

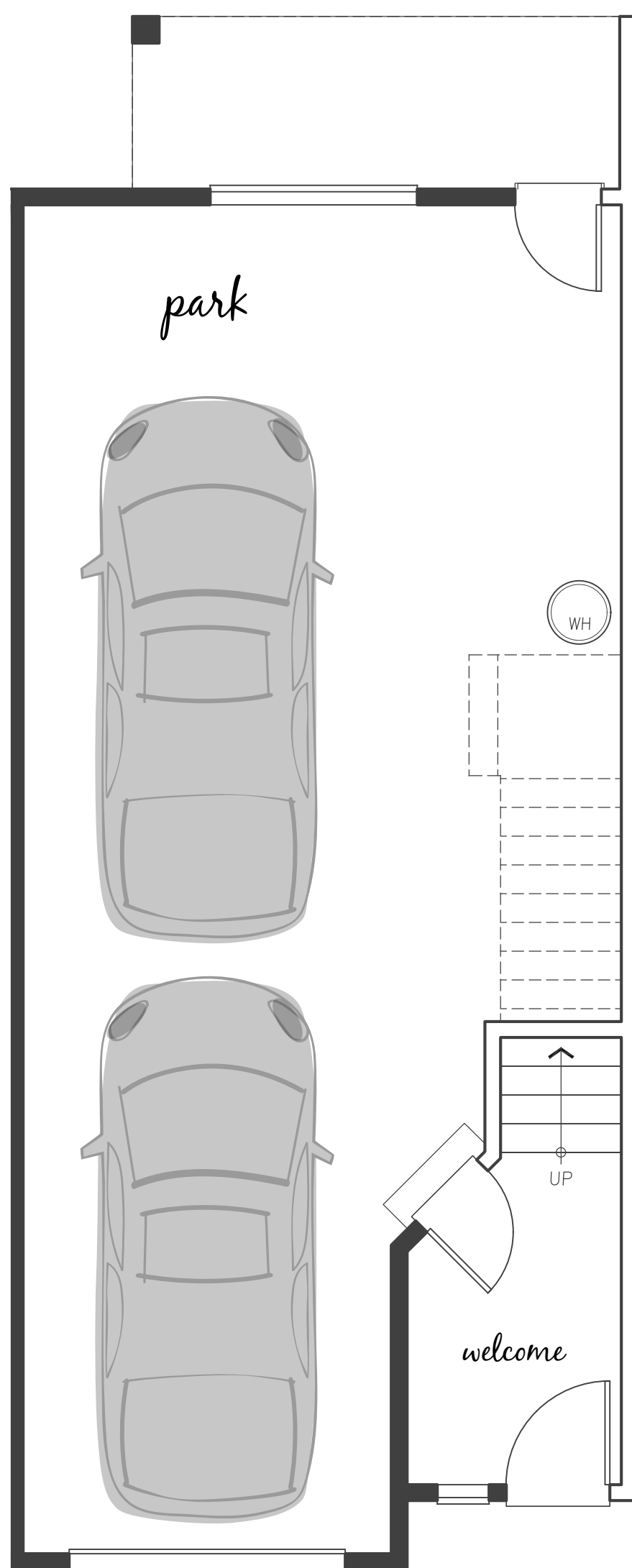
sq ft 1698

- 2 Bedrooms
- 2.25 Bath
- 2 Car Garage
- Flex room

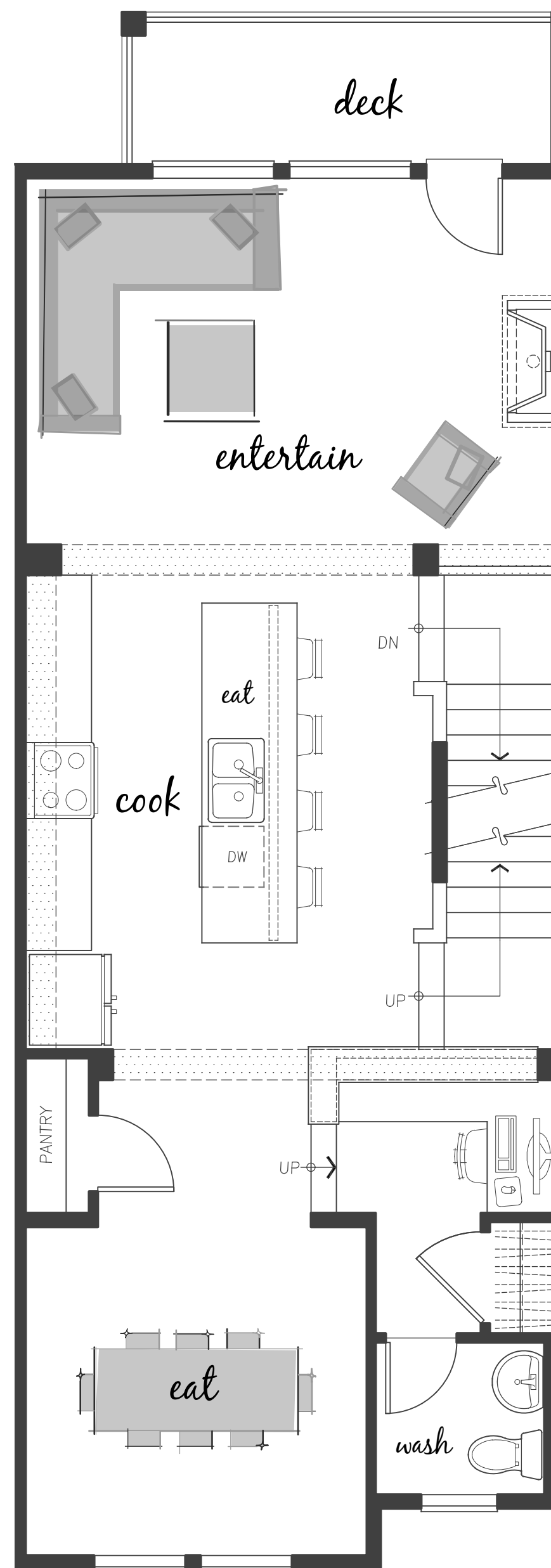


designer features

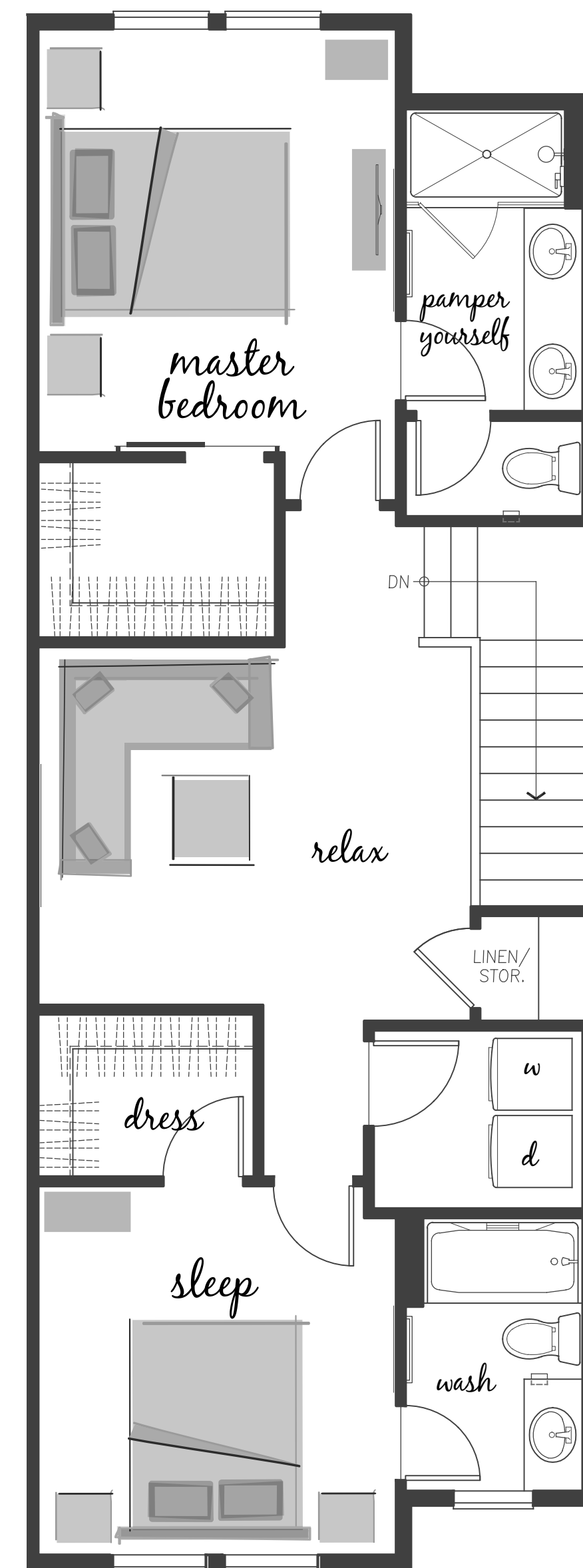
- Open Concept Living Space
- Contemporary Middle Kitchen
- Great Space for Entertaining
- Spacious Dining Room
- Versatile Flex Space
- Upstairs Mater Suite



Lower Floor



Middle Floor



Upper Floor



Westcott
HOMES

westcotthomes.com

In a continuous effort to improve its products, the builder reserves the right in its sole discretion to make changes or modifications to maps, plans, specifications, materials, features, and colors without notice. All maps, plans, landscaping and elevation renderings are artists' conceptions and are not to scale. Each of the Westcott Homes communities is developed by a separate limited liability company (LLC) or is a separate corporate entity.